

SHELL U.K. EXPLORATION AND PRODUCTION

COMPLETION LOG: DUNLIN 211/23-A13 (A27) OIL PRODUCER

WELL RECORD NO. 21FEB1986
DEPARTMENT OF ENERGY

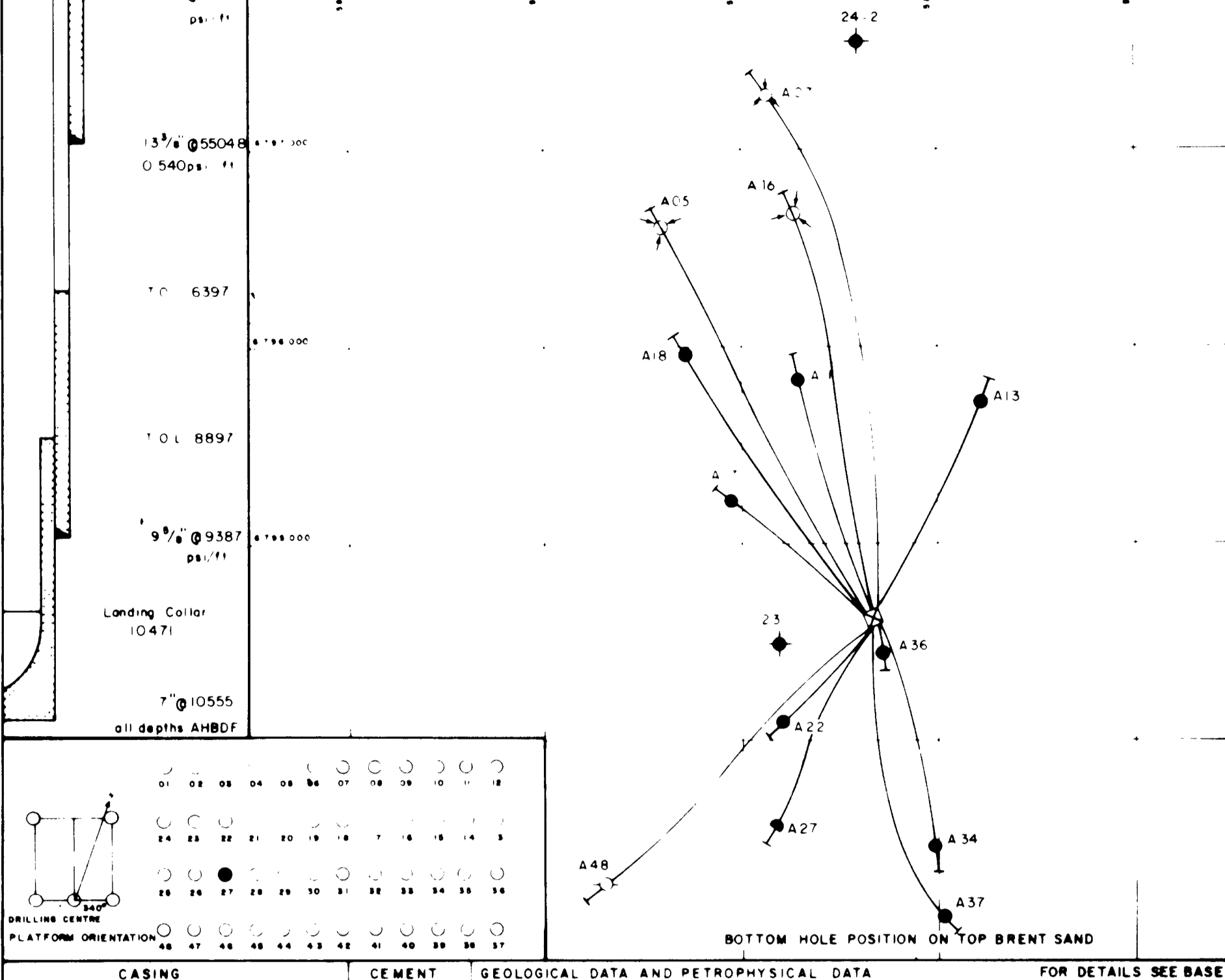
CO-ORDINATES OF PLATFORM CENTRE
UTM: N. 6 794608-59
E. 585655-96

CO-ORDINATES OF CONDUCTOR
UTM: N 6794578-08
E 585657-58

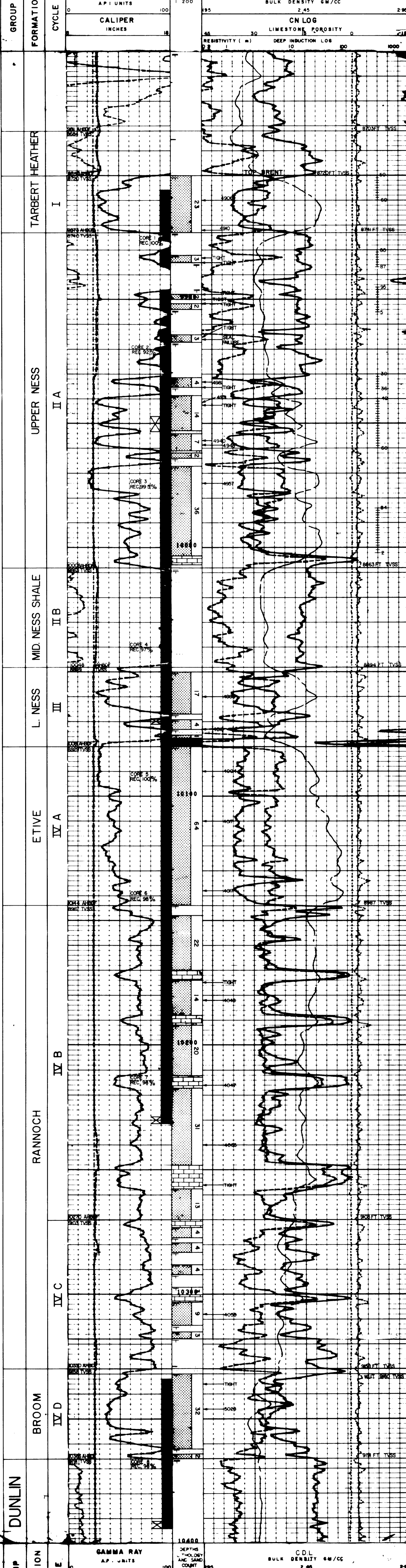
C2012335
This material is subject to copyright

SPUDDED FOR CASING	24/4/80	18/5/80	25/5/80	2/6/80	PREPARED DATE	COMPLETION DATE	MUD MESH COMP	5/7/80	PROD COMMENCED
SUSPENDED AT CASING	27/4/80	23/5/80	31/5/80	9/6/80	REVISIONS		PERFORATED	25/7/80	SUSPENDED

Derrick Floor	RUN No	DATE	MEASURED INTERVAL	BIT SIZE	BHT	REMARKS	MUD				Rmt @ Meas Temp	
							Type	Grav	Surf	Temp		
466	BGL 1	22/5	1005 - 1974	26			INVM	635				
Seabed	RFT 1	23/6	9387 - 10394	8 1/2	195							
10' @ 755	FDC/CNL 1	25/6	9390 - 10560	8 1/2	185							
10' @ 1005	ISP/SINIC 1	25/6	9390 - 10558	8 1/2	185							
	NGT 1	25/6	9390 - 10560	8 1/2	185							
	RFT 2	26/6	9387 - 10560	8 1/2	185							
	BHL/SINIC	26/6	9390 - 10555	8 1/2	190							
	CBL 1	29/6	8700 - 10434	8 1/2	210							



CASING	Grade	Thread	CEMENT	GEOLOGICAL DATA AND PETROPHYSICAL DATA		FOR DETAILS SEE BASE
20"	9.4	K55	BTC	LIBIT		
13 3/4"	6.8	K55	BTC	CLASS A		
9 1/2"	4.7	C95	VAM	LIBIT		
7"	2.9	L80	VAM	CLASS G		



GROUP	FORMATION	CYCLE	GAMMA RAY API UNITS	DEPTH LOG	CDL BULK DENSITY GM/CC	CN LOG
DUNLIN				10400	2.46	
				10380		
				10360		
				10340		
				10320		
				10300		
				10280		
				10260		
				10240		
				10220		
				10200		
				10180		
				10160		
				10140		
				10120		
				10100		
				10080		
				10060		
				10040		
				10020		
				10000		